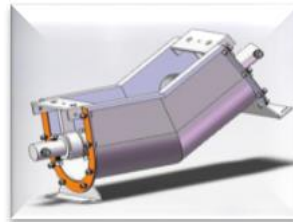


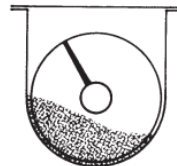
## ***Screw Conveyor Cuttings Capacity Guide***



### Recommended Cuttings Capacity Guide

Small size screw conveyors:			Approximate Length of Screw Conveyor:					
Tons/Hr (T/Hr):	Drive Shaft Size:	Conveyor Shaft Diameter:	10ft	20ft	30ft	40ft	50ft	60ft
5 Tons/Hr	1.5 inch	6 inch	1.1kW	1.5kW	2.2kW	3.0kW	3.0kW	4.0kW
10 Tons/Hr	2.0 inch	9 inch	2.2kW	3.0kW	4.0kW	4.0kW	4.0kW	5.0kW
15 Tons/Hr	2.0 inch	10 inch	2.2kW	4.0kW	5.5kW	5.5kW	5.5kW	6.0kW
Medium to large size screw conveyors:			Approximate Length of Screw Conveyor:					
Tons/Hr (T/Hr):	Drive Shaft Size:	Conveyor Shaft Diameter:	12ft	24ft	36ft	48ft	60ft	75ft
25 Tons/hr	2.0 inch	12 inch	4.0kW	5.5kW	7.5kW	N/A	N/A	N/A
25 Tons/hr	3.0 inch	12 inch	4.0kW	5.5kW	7.5kw	7.5kW	11.0kW	11.0kW
30 Tons/hr	3.0 inch	12 inch	4.0kW	5.5kW	7.5kW	11.0kW	11.0kW	15.0kW
40 Tons/hr	3.0 inch	12 inch	5.5kW	7.5kW	11.0kW	15.0kW	15.0kW	15.0kW
50 Tons/hr	3.0 inch	14 inch	5.5kW	7.5kW	11.0kW	15.0kW	18.0kW	18.0kW
60 Tons/ hr	3.0 inch	16 inch	7.5kW	11.0kW	15.0kW	15.0kW	18.5kW	18.5kw
70 Tons/hr	3.0 inch	18 inch	11.0kw	15.0kW	15.0kW	18.5kW	18.5kW	22.5kW

Calculations above are for guidance only. Electric output figures in this table are in Kw at 50Hz. For 60Hz equivalent please contact JBS. Electric output and frequency required should be stated at time of order. Standard pitch flights and trough loading capacity of 30% are used in this guide.

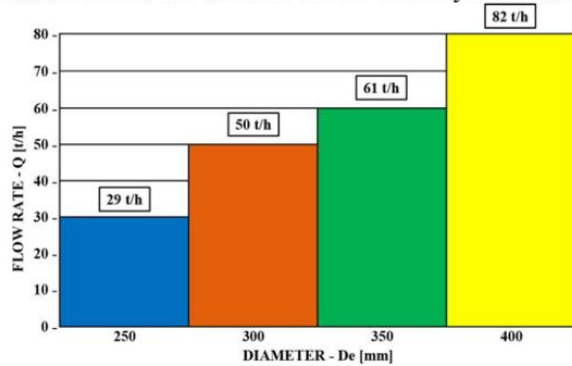


30% Trough Loading

Flow rate Q in m<sup>3</sup>/h: 30 m<sup>3</sup>/h

### Diameter:

Use the diagram to select the desired screw conveyor diameter, according to the flow rate needed.



### Diameter De:

- 250 mm [10"]
- 300 mm [12"]
- 350 mm [14"]
- 400 mm [16"]

30m<sup>3</sup>/h sample only.

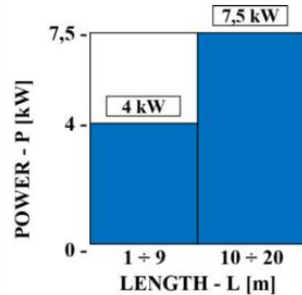
DATA OBTAINED CONSIDERING:  
 MATERIAL DENSITY: 2,2 t/m<sup>3</sup>;  
 TROUGH FILLING: 30%;  
 MAX SLOPE: 15°  
 (ACCORDING TO BS 4409-3:1982  
 SCREW CONVEYORS.  
 METHOD FOR CALCULATING  
 DRIVE POWER)

### Motor power:

Use the relevant diagram to select the appropriate motor power, according to needed length of the screw conveyor.

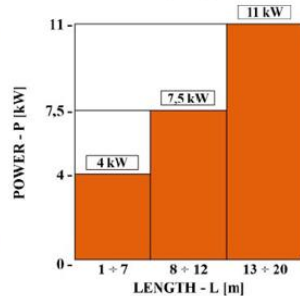
#### De=250 (mm)

- 4.0 (kw)
- 7.5 (kw)



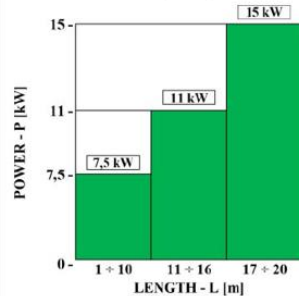
#### De=300 (mm)

- 4.0 (kw)
- 7.5 (kw)
- 11 (kw)



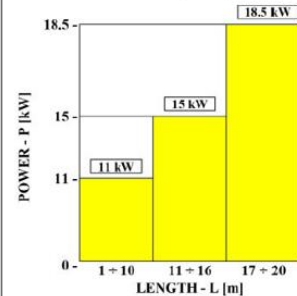
#### De=350 (mm)


- 7.5 (kw)
- 11 (kw)
- 15 (kw)



#### De=400 (mm)

- 11 (kw)
- 15 (kw)
- 18.5 (kw)



In October 2017 JBS purchased the assets, stock and IT of Screw Conveyor Ltd Aberdeen.  screwconveyor

For further information on any of our Screw Conveyor services including design, manufacturing, spare parts, technical support, installation & commissioning or for 24/7 technical assistance please contact:



## **Head Office Peterhead UK**

JBS Fabrication Ltd  
South View  
Dales Industrial Estate  
Peterhead AB42 3GZ  
Scotland, UK

Tel: +44 (0) 1779 479742

**Website:** [www.jbsgroupscotland.co.uk](http://www.jbsgroupscotland.co.uk)  
**Email:** [info@jbsgroupscotland.co.uk](mailto:info@jbsgroupscotland.co.uk)